

UltraPure cfDNA

- Purified cfDNA from human plasma
- Concentration of 1ng/ul in TT buffer
- Certificate of Analysis included
- Product Evaluation Form included

- Sourced from single donors
- Robust performance compared to cfDNA purified by current gold standard method

Quality tested for

- DNA Size Distribution
- PCR Amplifiability
- Performance in NGS

Library Construction Assays

REQUEST PRICING AND INFORMATION

Email PlasmaLab@plasmalab.com



**Starting Material
for Research and
Assay Development**



**Evaluation of
In-house Purified
cfDNA Extraction
Procedures**



**Validation
of Liquid Biopsy
Assays**

Certificate of Analysis for UltraPure cfDNA - Lot 1909011

Product: UltraPure cfDNA purified from human plasma

Source: Healthy donor; plasma tested and confirmed negative for HIV, HCV, and HBV

Donor gender: Female

Size: 50 ng

Concentration: 1 ng/ul

Volume: 50 ul

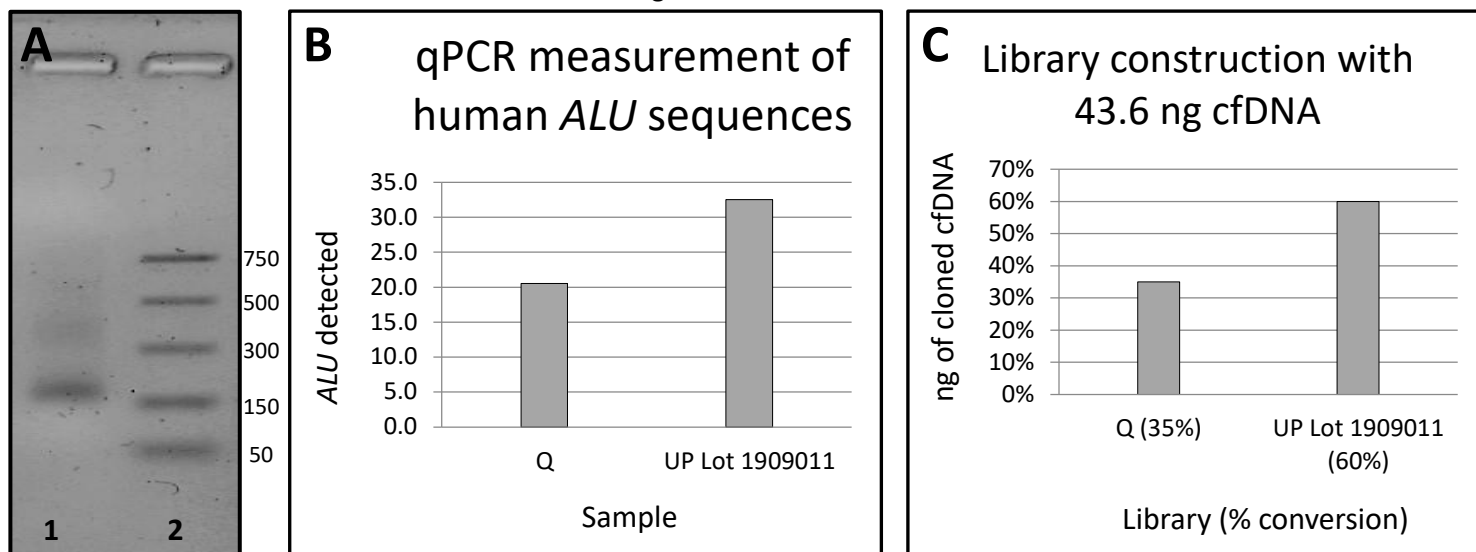
Buffer: 10 mM Tris pH8.0, 1 mM EDTA, 0.05% Tween-20

Storage temp: -20° C

Shelf life: ≥ 2 years

Analysis methods:

- Physical appearance: Agarose gel electrophoresis
- Performance with PCR: qPCR measurement of human *ALU* sequences
- NGS library construction: qPCR measurement of adaptor attachment
- Standard control: Purified cfDNA using Qiagen Circulating Nucleic Acids Kit (Q); cfDNAs were quantified using the Thermo Fisher Qubit instrument and reagents



Analysis of UP cfDNA. (A) 2% agarose gel. Lane 1: UP cfDNA. Lane 2: MW markers. The size in bp of the New England Biolabs PCR standard is shown on the right. (B) qPCR detection of human *ALU* sequences. The relative performance of equivalent amounts of Q vs. UP cfDNA is shown; the vertical scale is quantitative detection of *ALU* sequences. (C) NGS library construction in absolute yields. The qPCR assay measures the ligation efficiency of proprietary Ripple Biosolutions DNA adapters to cfDNA fragments.

FOR RESEARCH USE ONLY. NOT FOR DIAGNOSTIC APPLICATIONS.



*UltraPure cfDNA is produced in partnership
with PlasmaLab International,
your source for human plasma products.*

***Invest in your
world of research.
Invest in UltraPure cfDNA.***



PlasmaLab[™]
INTERNATIONAL



RIPPLE
BIOSOLUTIONS